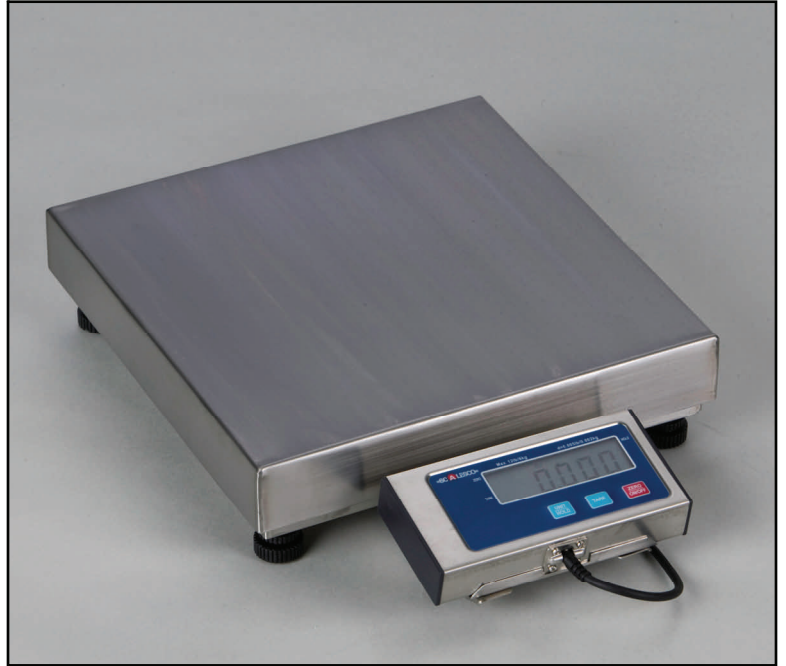


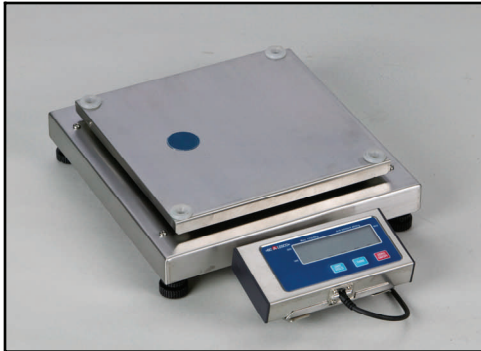
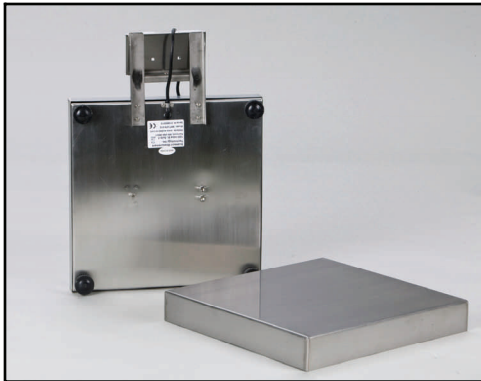
# Model SMT-278 Bench Scale

## Product Details

Part #	278-012	278-030
Price	\$345.00	\$345.00
Capacity	12 lb / 6 kg	30 lb / 15 kg
Resolution	0.005 lb / 0.002 kg	0.01 lb / 0.005 kg
Selectable Capacity and Resolution	12 lb x 0.1oz	30 lb x 0.2oz
Accuracy / Linearity	+/- 1d	+/- 1d
Divisions	3,000	3,000
Weight Platter Dimensions	12" x 12"	
Units of Measure	LB, KG, LB/oz	
Operating Temp	50° - 104° F (10° - 40° C)	



**Model 278 bench scale with LCD display attached to base**



*The Model 278 bench scale is a cost effective solution for general weighing and portion control applications. It provides a water-tight scale base assembly for wet environments.*

*Great for use as a portion control scale, pizza scale or bench scale for weighing food items.*

## Product Specifications

<b>Display :</b>	0.625" H digits with LCD display
<b>Construction:</b>	304 grade stainless steel weigh platter, load-bridge and base, aluminum load cell, plastic/stainless steel display, rubber locking feet
<b>Operator Keys:</b>	Zero/On(Off), Tare, Unit/Hold
<b>Interface:</b>	RS-232C Interface, 9 pin DB-9 connector
<b>Power:</b>	120 V AC wall mount adapter with 5 foot cord, 4 "AAA" batteries
<b>Battery Life:</b>	15 hours of use with low battery indication
<b>Type Approval:</b>	For use in non-trade applications
<b>Approvals / Certifications:</b>	FCC compliance, UL/CUL AC adapter
<b>Package Contents:</b>	Scale, AC adapter, 4 "AAA" batteries
<b>Scalesco Warranty Policy:</b>	1 year from date of shipment

**Stainless steel construction provides ease of cleaning after use with food, paint or chemicals.**

### Scalesco Measurement Technology Inc.

1200 Indus Street Suite A, Fairmont MN 56031  
 (Toll Free) 866-587-9773 (Phone) 507-238-9773 (Fax) 507-238-5447  
 (Web-site) <http://www.scales-co.com> (E-mail) [sales@scales-co.com](mailto:sales@scales-co.com)

# Model SMT-278 Bench Scale

## Product Information

Part #	278-012	278-030
Product Dimensions	12" D x 12" W x 3.125" H (with display attached 16"D)	
Package Dimensions	18.25" x 14.75" x 5.25"	
Product Weight	12.5 lbs	
Ship Weight	15 lbs	
Minimum calibration weight	2 and 5 lbs	5 and 10 lbs

## Options/Accessories/Replacement Parts

Part Number	Description
S278-001	Wall mount AC adapter
S100-001	RS-232 cable, 6 ft (Straight pass-thru)
S278-002	Optional Plastic Tare Foot Switch
S278-003	Wall mount bracket

## Product Features and Functions

<b>RS-232</b>	5 Selectable settings for output formats; Continuous or Stable output of displayed weight or GTN; including bi-directional protocol for use with UPS Worldship®
<b>Optional Tare Foot Switch</b>	Allows you to tare the weight of items, returning the scale to a zero "net" weight, without having to use the display keypad. Perfect for portion control. Plastic foot switch with 4 feet of cable, connecting to display.
<b>Display - Quick Disconnect</b>	Provides a secure fit and reduces broken or strained cables with 6 feet of cable.
<b>Integrated or Remote LCD Display</b>	0.625" LCD display attached base of scale. For washdown applications, mount display remotely with 6.5' of cable. Provides connection for Optional tare foot switch
<b>Single Weight Hold</b>	Use print key activate/deactivate the capture of the largest stable weight reading.
<b>Auto Wt Hold &amp; Release</b>	Captures largest stable weight reading and automatically releases when new weight is applied. Configure to ignore changes in a stable weight readings from 0.4 to 10 lbs.
<b>Calibration Method</b>	Choose to calibrate with KG or LB. Calibrate using 12.5%-80% and 25% - 100% weights.
<b>Adjustable and Locking Feet</b>	Allows you to adjust scale on uneven surfaces to provide best weighing performance, increase height by 1/2".

## Product Features and Functions

<b>Auto Shutdown</b>	Selectable setting from 0-15 minutes
<b>Baud Rates &amp; Data Formats</b>	Selectable from 1200—19,200; 8N1, 7O1, 7E1
<b>Auto Zero Tracking</b>	Selectable from 0— 1 lb
<b>Stabilization Filters</b>	Four selectable settings to meet application environment
<b>Units of Measure</b>	Standard factory setting is lb/kg. Configure for lb/lb oz, kg/lb oz, kg/lb/lb oz, lb only, kg only or lb/oz only.
<b>Tare Range</b>	Up to 100% of max. capacity, subtractive (subtract tare weight from max capacity = new max capacity)
<b>Weight Response</b>	Stable weight reading within 2 seconds.

## Scalesco Measurement Technology Inc.

1200 Indus Street Suite A, Fairmont MN 56031  
 (Toll Free) 866-587-9773 (Phone) 507-238-9773 (Fax) 507-238-5447  
 (Web-site) <http://www.scales-co.com> (E-mail) [sales@scales-co.com](mailto:sales@scales-co.com)